



1 – Indifferently

0 – Won't teach at all

3. How well were the teachers able to communicate?

4 – Always effective

3 – Sometimes effective

2 – Just satisfactorily

1 – Generally ineffective

0 – Very poor communication

4. The teacher's approach to teaching can best be described as

4 – Excellent

3 – Very good

2 – Good

1 – Fair

0 – Poor

5. Fairness of the internal evaluation process by the teachers.

4 – Always fair

3 – Usually fair

2 – Sometimes unfair

1 – Usually unfair

0 – Unfair

6. Was your performance in assignments discussed with you?

4 – Every time

3 – Usually

2 – Occasionally/Sometimes

1 – Rarely

0 – Never

7. The institute takes active interest in promoting internship, student exchange, field visit opportunities for students.

4 – Regularly

3 – Often

2 – Sometimes

1 – Rarely

0– Never

8. The teaching and mentoring process in your institution facilitates you in cognitive, social and emotional growth.

4 – Significantly

3 – Very well

2 – Moderately

1 – Marginally

0– Not at all

9. The institution provides multiple opportunities to learn and grow.

4 – Strongly agree

3 – Agree

2 – Neutral

1 – Disagree

0– Strongly disagree

10. Teachers inform you about your expected competencies, course outcomes and programme outcomes.

4 – Every time

3 – Usually

2– Occasionally/Sometimes

1 – Rarely

0– Never

11. Your mentor does a necessary follow-up with an assigned task to you.

4 – Every time

3 – Usually

2 – Occasionally/Sometimes

1 – Rarely

0 – I don't have a mentor

12. The teachers illustrate the concepts through examples and applications.

4 – Every time

3 – Usually

2 – Occasionally/Sometimes

1– Rarely

0 – Never

13. The teachers identify your strengths and encourage you with providing right level of challenges.

4 – Fully

3 – Reasonably

2 – Partially

1 – Slightly

0– Unable to

14. Teachers are able to identify your weaknesses and help you to overcome them.

4 – Every time

3 – Usually

2 – Occasionally/Sometimes

1 – Rarely

0 – Never

15. The institute/ teachers use student centric methods, such as experiential learning, participative learning and problem solving methodologies for enhancing learning experiences.

4 – To a great extent

3 – Moderate

2 – Some what

1 – Very little

0 – Not at all

16. Teachers encourage you to participate in extracurricular activities.

4 – Strongly agree

3 – Agree

2 – Neutral

1 – Disagree

0 – Strongly disagree

17. Efforts are made by the institute/ teachers to inculcate soft skills, life skills and employability skills to make you ready for the world of work.

4 – To a great extent

3 – Moderate

2 – Some what

1 – Very little

0 – Not at all

18. What percentage of teachers use ICT tools such as LCD projector, Multimedia, etc. while teaching.

4 – Above 90%

3 – 70 – 89%

2 – 50 – 69%

1 – 30 – 49%

0 – Below 29%

19. The overall quality of teaching-learning process in your institute is very good.

4 – Strongly agree

3 – Agree

2 – Neutral

1 – Disagree

0 – Strongly disagree

20. The institution makes effort to engage students in the monitoring, review and continuous quality improvement of the teaching learning process.

4 – Strongly agree

3 – Agree

2 – Neutral

1 – Disagree

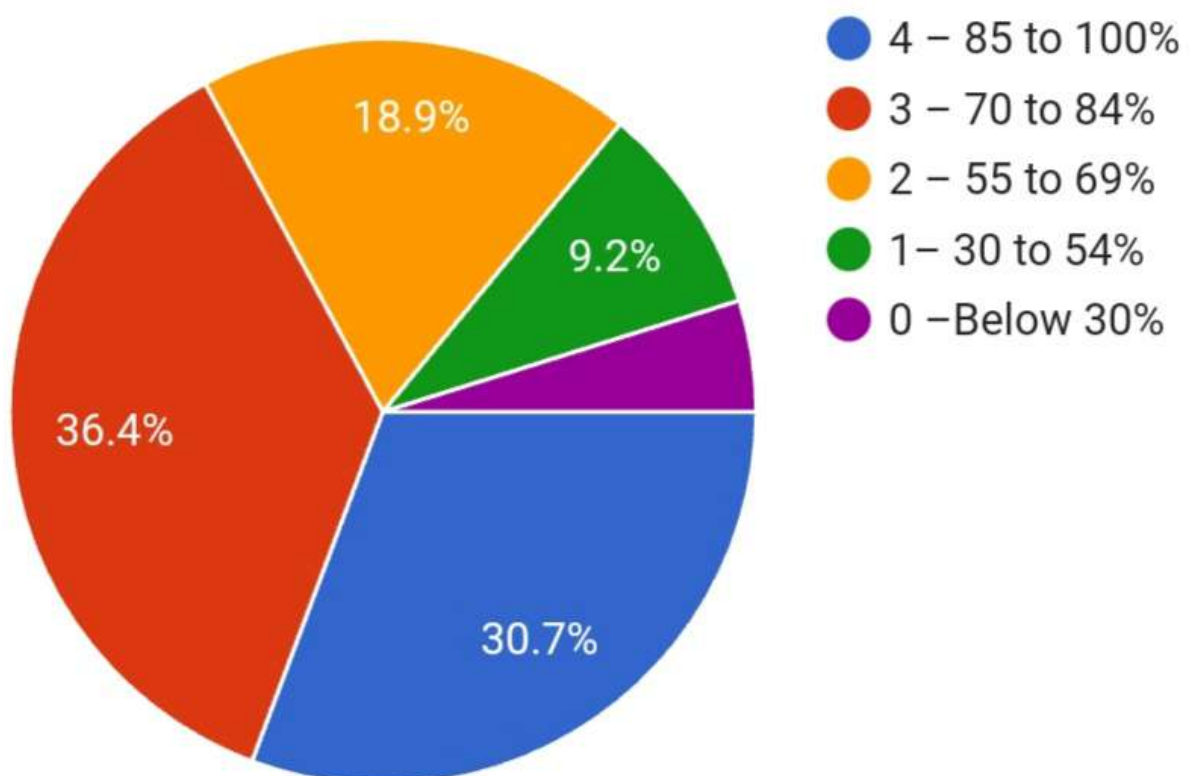
0 – Strongly disagree

Principal

## Instructions to fill the questionnaire:

- All questions should be compulsorily attempted.
- Each question has five responses, choose the most appropriate one.

228 responses



**Average**

0 / 0 points

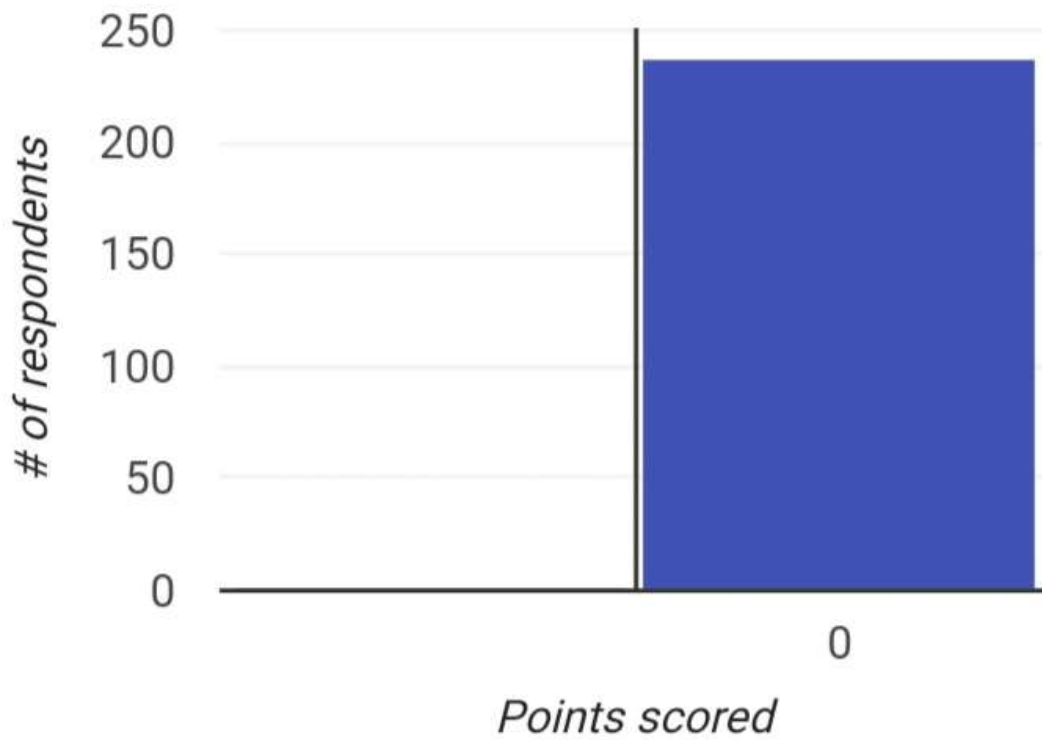
**Median**

0 / 0 points

**Range**

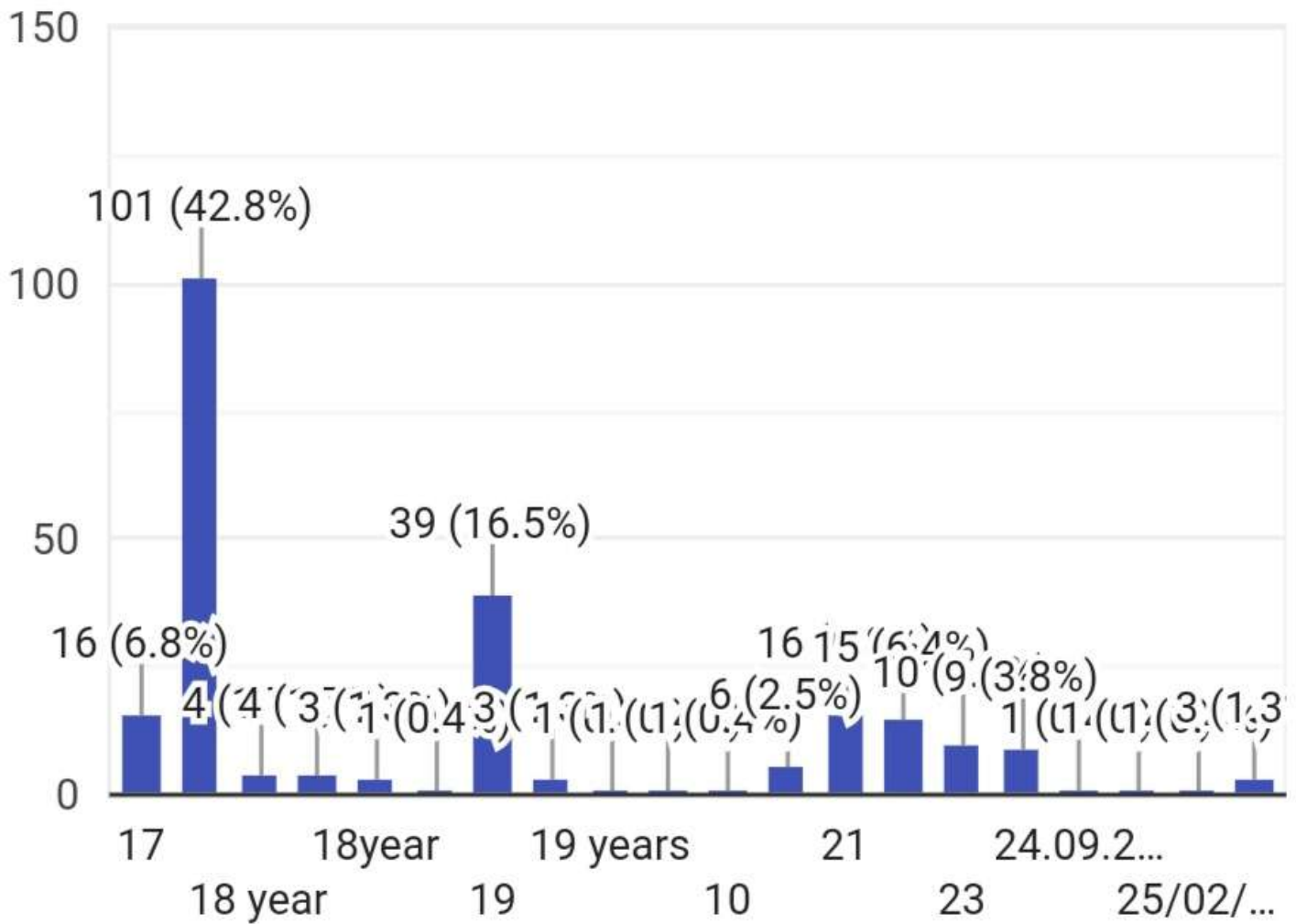
0 - 0 points

## Total points distribution



## B) Age:

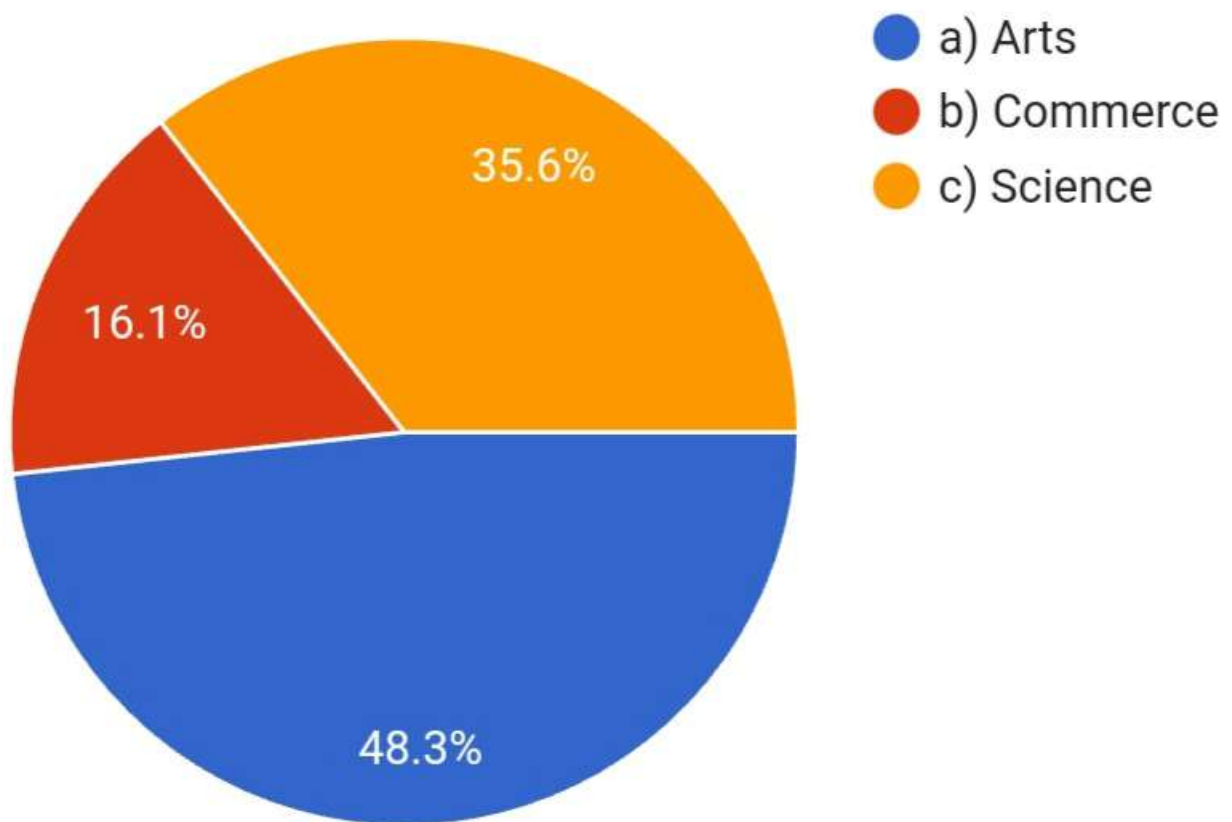
236 responses





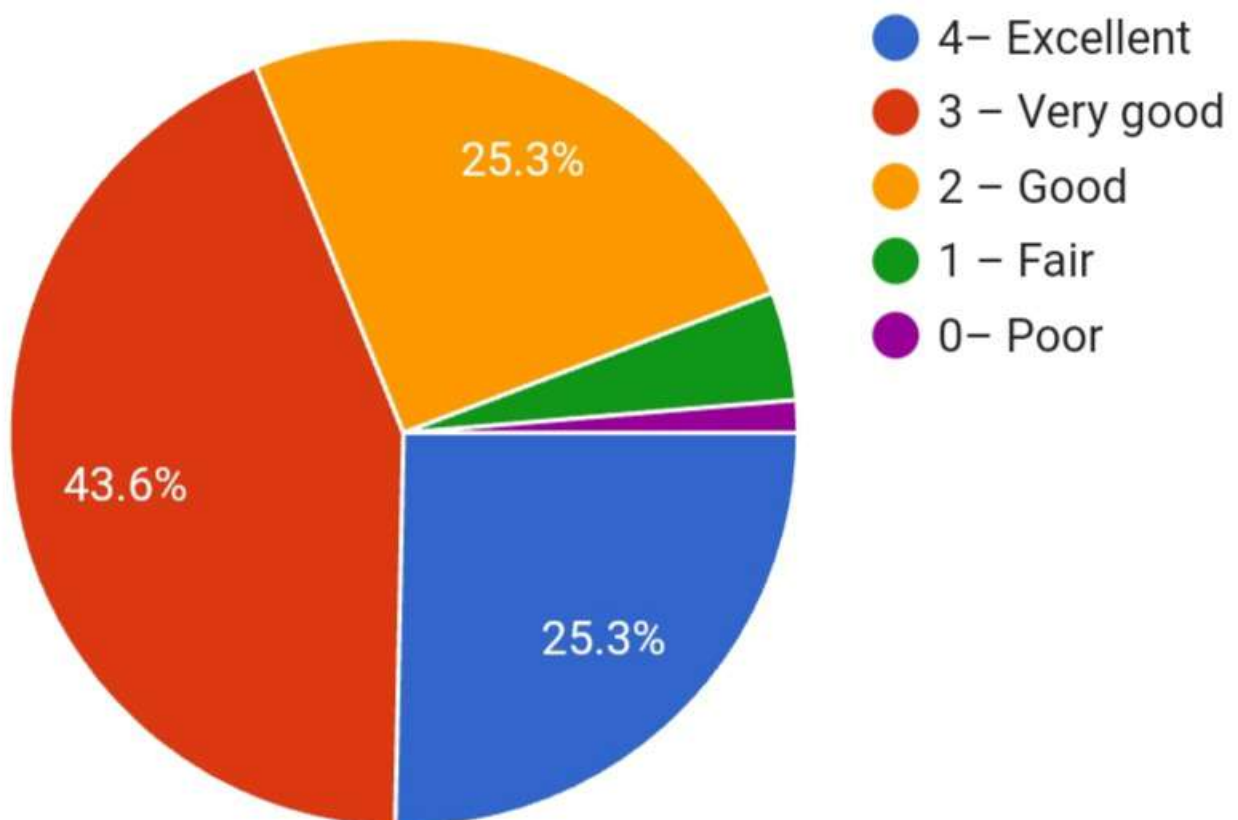
F) What subject area are you currently pursuing?

236 responses



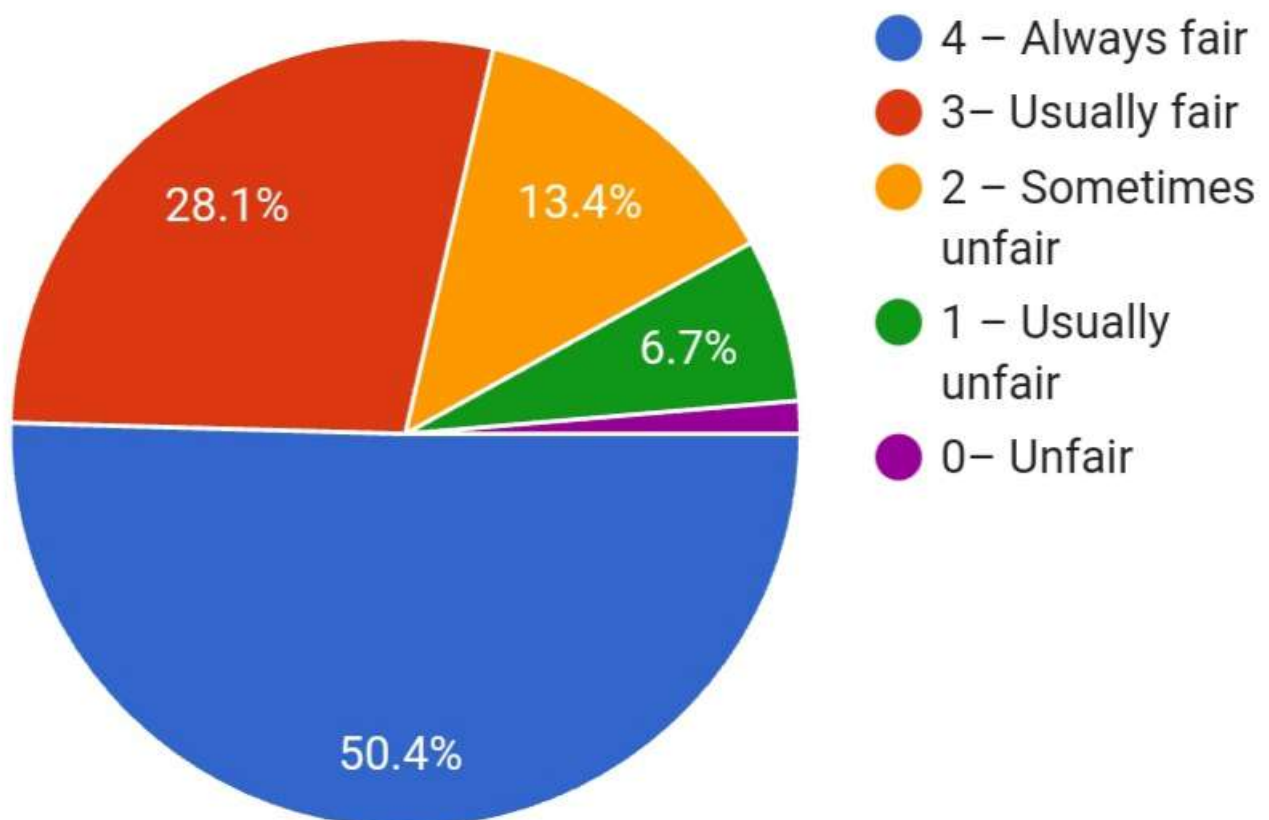
#### 4. The teacher's approach to teaching can best be described as

225 responses



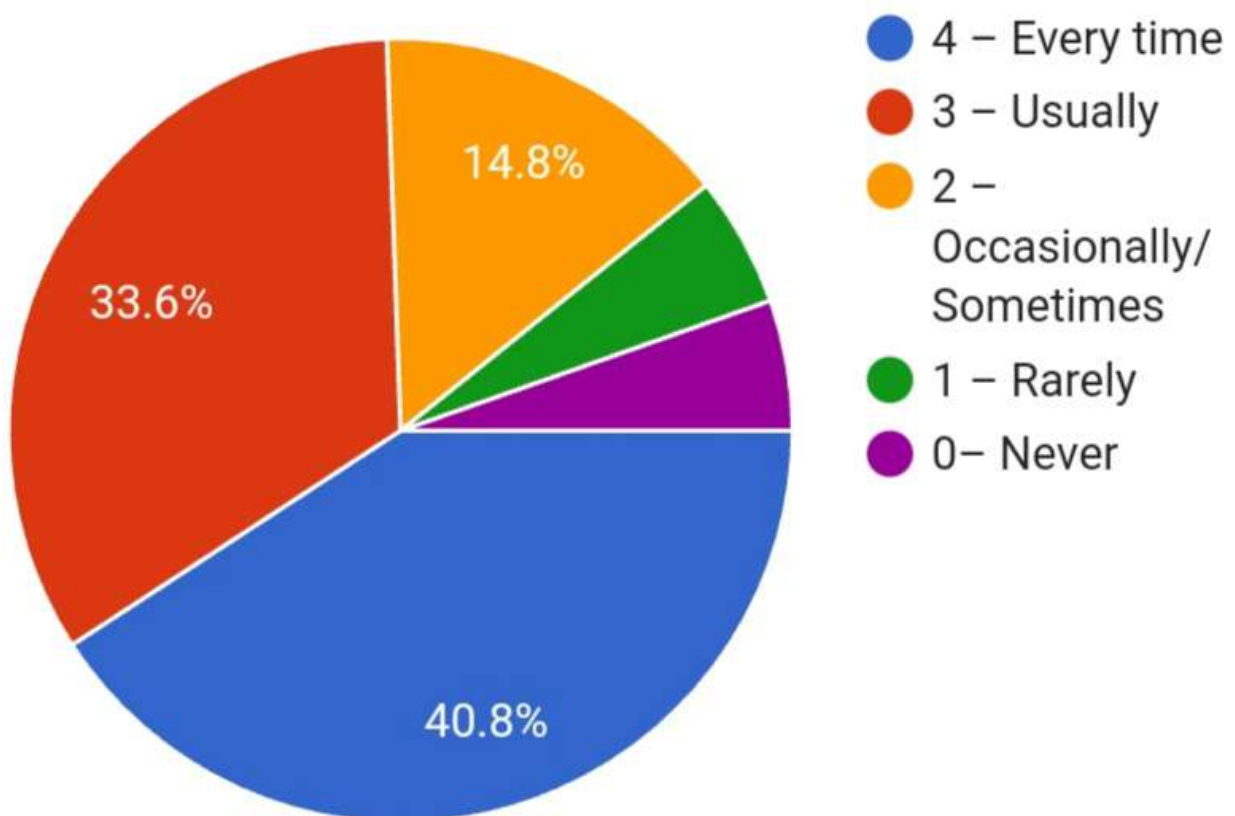
## 5. Fairness of the internal evaluation process by the teachers.

224 responses



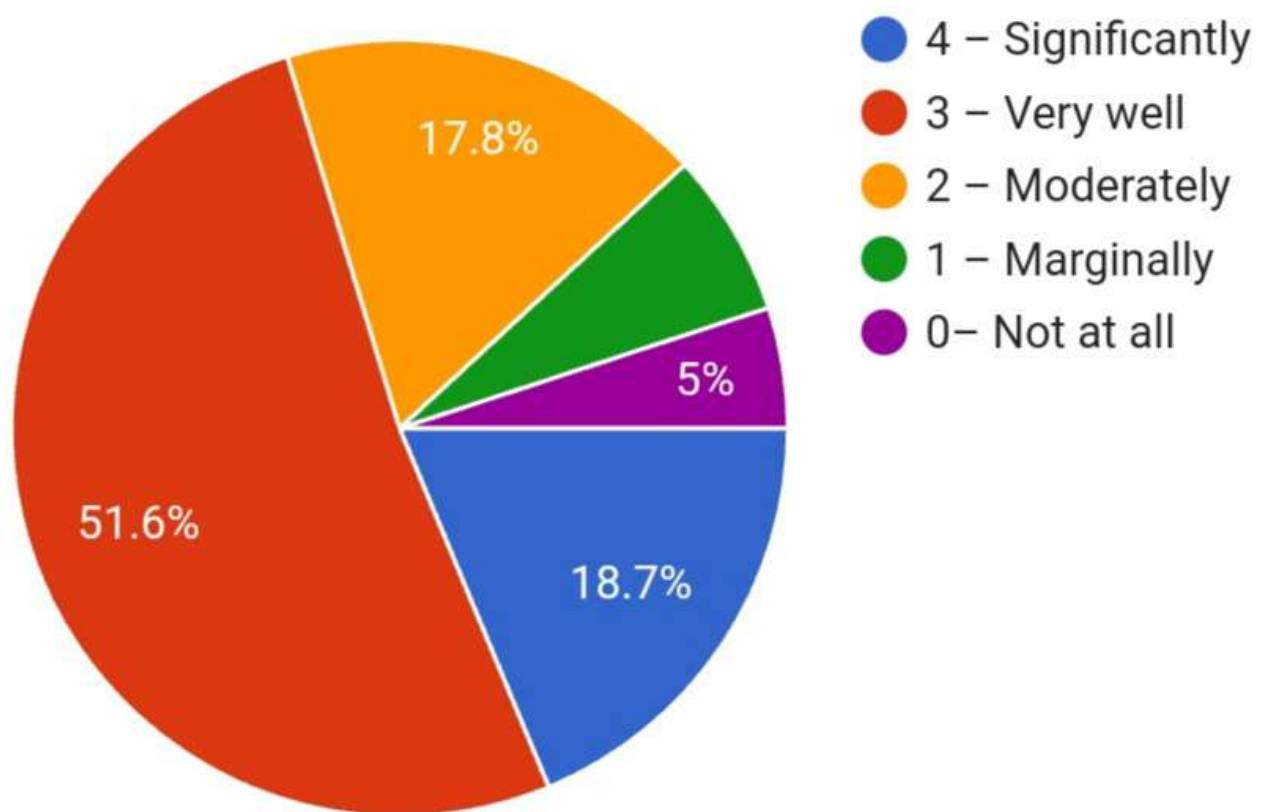
## 6. Was your performance in assignments discussed with you?

223 responses



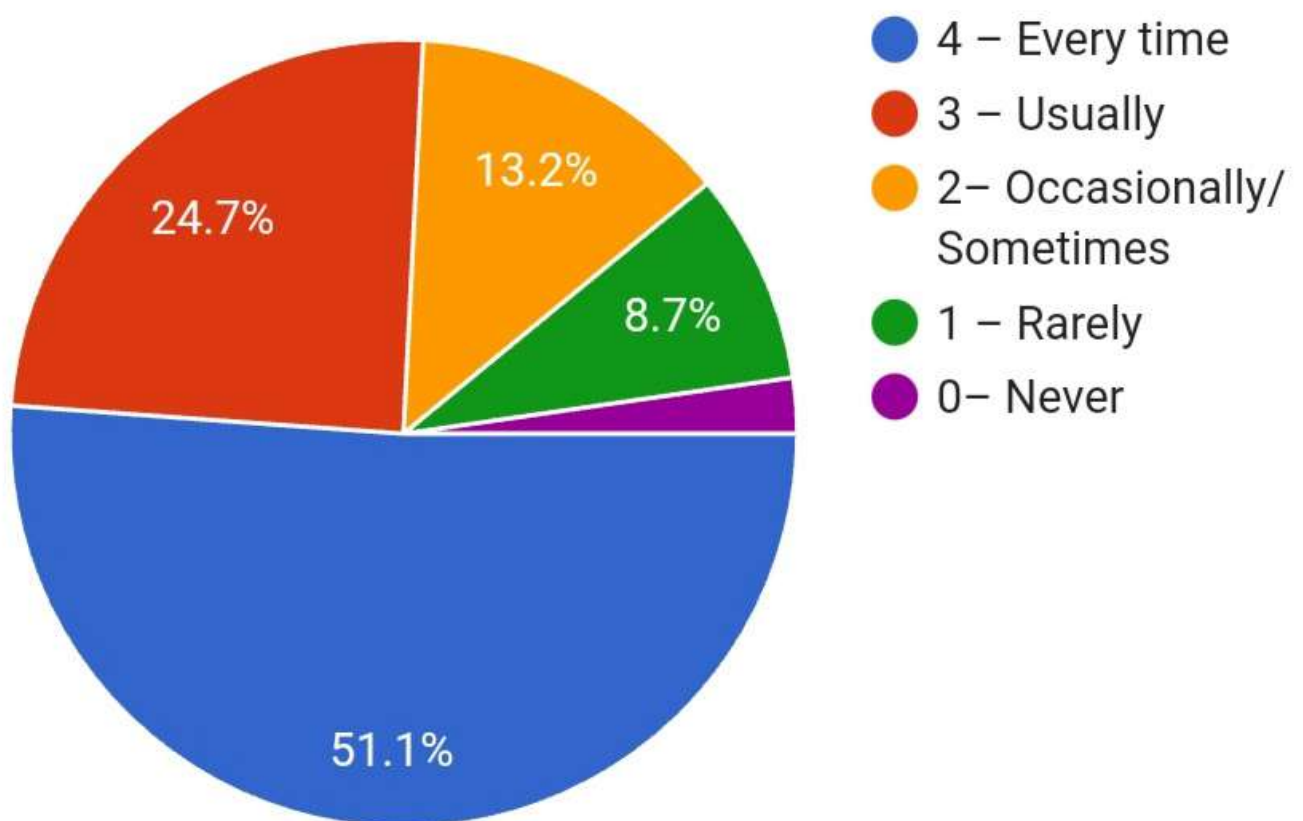
8. The teaching and mentoring process in your institution facilitates you in cognitive, social and emotional growth.

219 responses



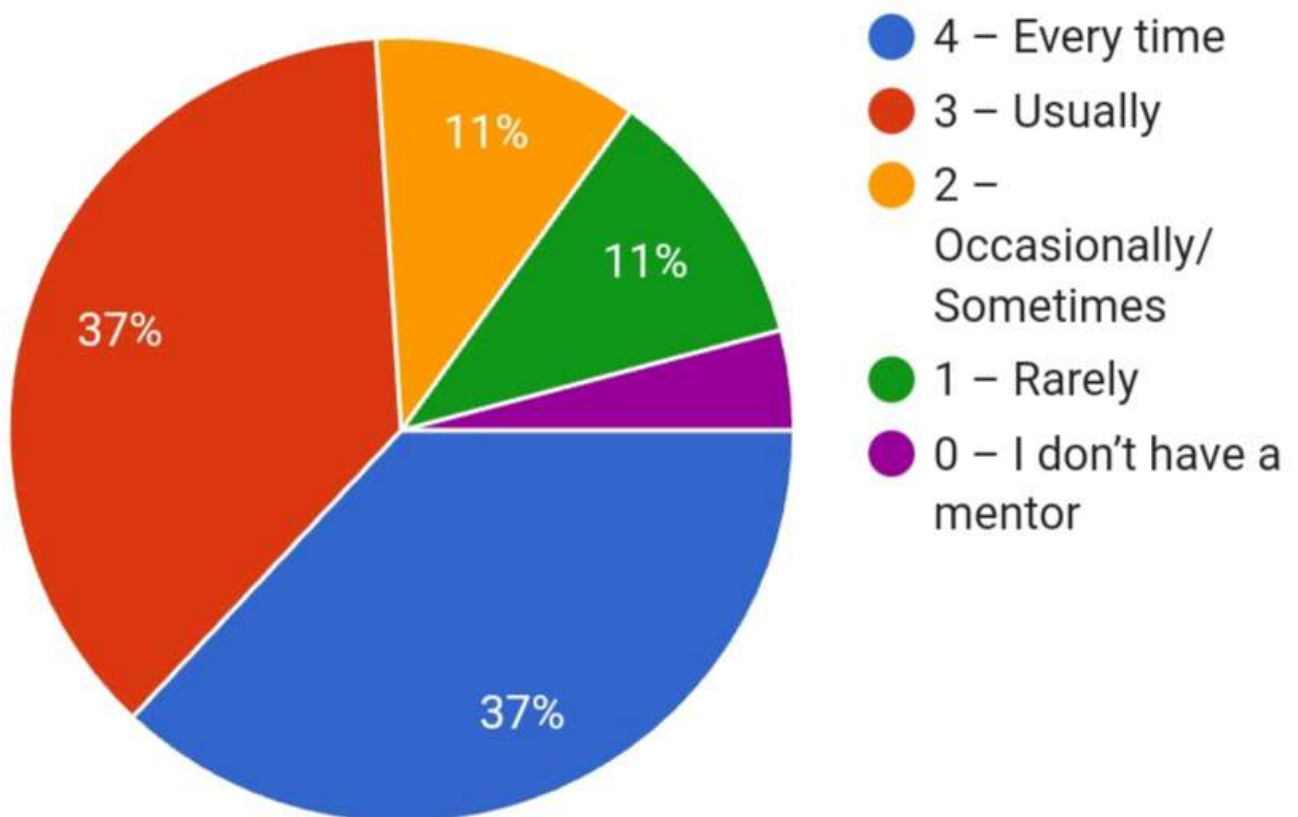
10. Teachers inform you about your expected competencies, course outcomes and programme outcomes.

219 responses



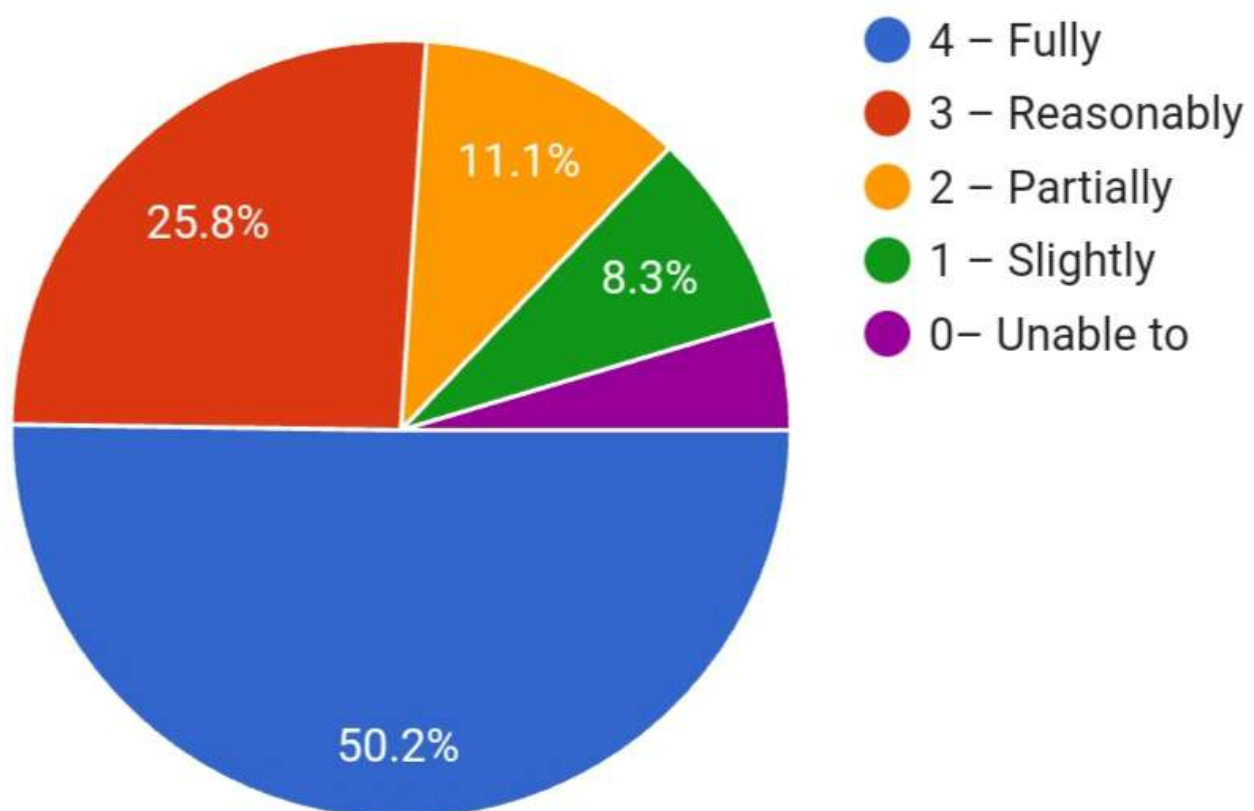
11. Your mentor does a necessary follow-up with an assigned task to you.

219 responses



13. The teachers identify your strengths and encourage you with providing right level of challenges.

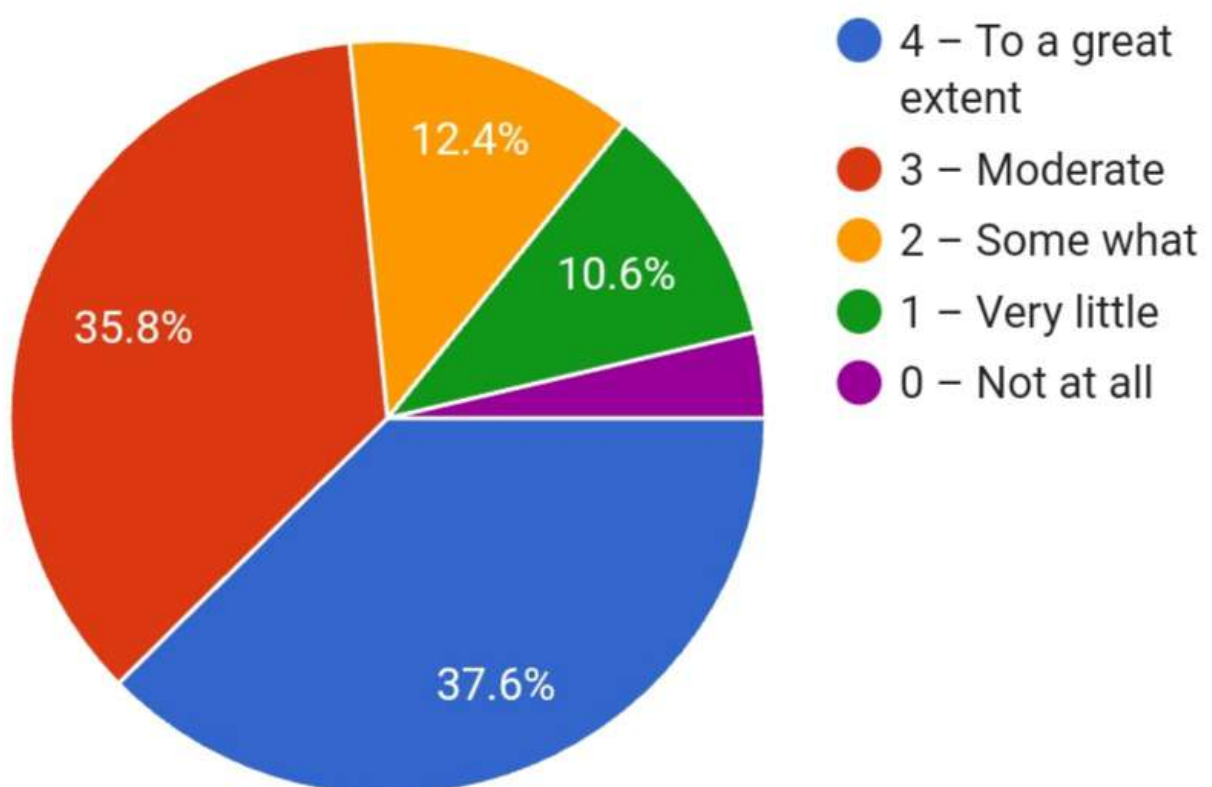
217 responses





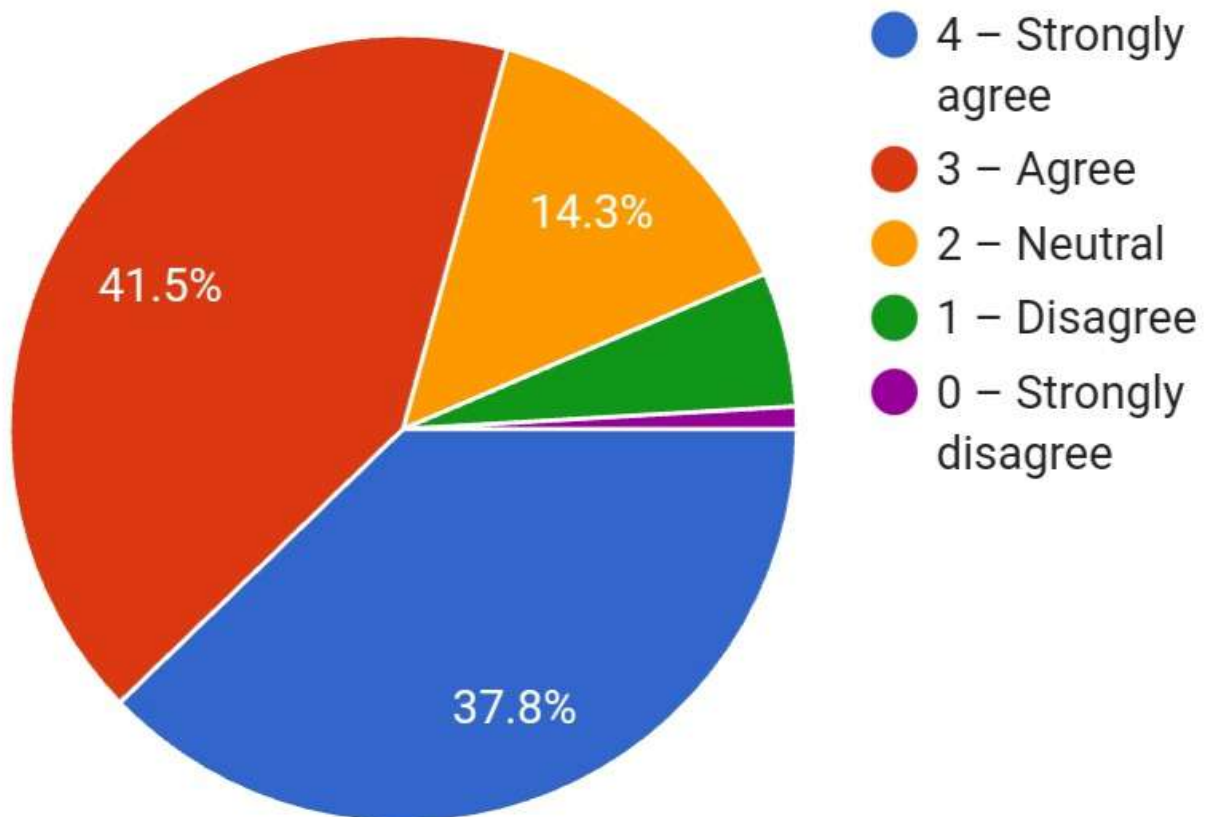
15. The institute/ teachers use student centric methods, such as experiential learning, participative learning and problem solving methodologies for enhancing learning experiences.

218 responses



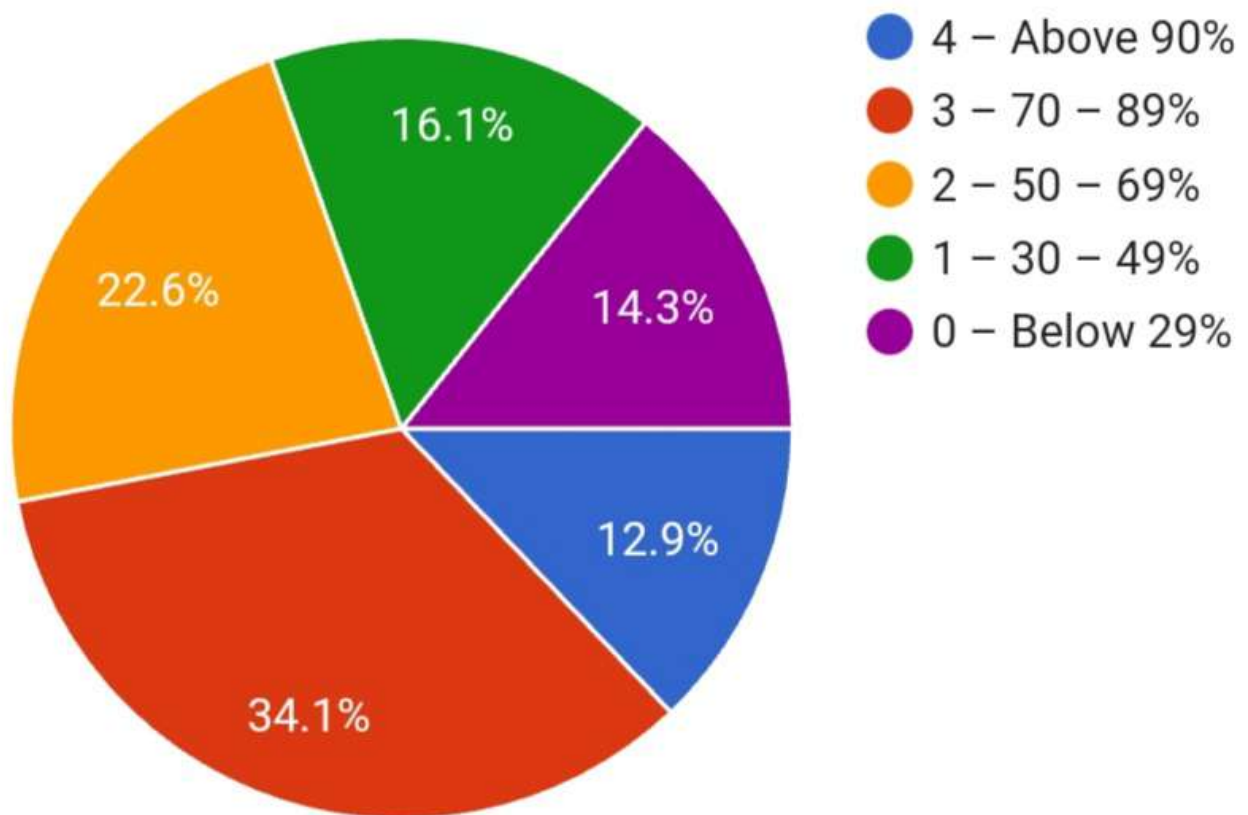
16. Teachers encourage you to participate in extracurricular activities.

217 responses



18. What percentage of teachers use ICT tools such as LCD projector, Multimedia, etc. while teaching.

217 responses



19. The overall quality of teaching-learning process in your institute is very good.

217 responses

